



# GeKaLaser®

Perfect and Clean  
Welding Technology

**Impeccable  
Combination**



# Why GeKaLaser P Series and Fiber Laser Welding

1

## Simple Use

No professional knowledge required, easy to use.

2

## High Welding Efficiency

Up to eight times faster than conventional welding methods

3

## Minimum Consumable Consumption

Up to 60% less consumable material consumption compared to other welding methods

4

## Excellent Welding Effect

100% penetration, robust, trouble-free welding without damaging even thin materials

5

## High Energy Efficiency

Photoelectric conversion efficiency of laser is up to 30% lower in energy consumption

6

## Comfortable and Flexible Use

P series fiber laser welding machines offer comfortable use due to their portability

7

## Without Levelling

No post-welding grinding required with continuous welding mode

8

## Welding, Cutting and Cleaning

With the H Series, welding and cleaning can be done, so solution etc. You do not need to use chemicals

# IMPECCABLE ENGINEERING

Thanks to the system we have developed, we convert the lost energy into power and return it as maximum efficiency, stable operation and long life.



CE

**CERTIFIED  
INNOVATIVE CONCEPT**

130 cm



100 cm

# Difference of Laser Welding from Conventional Welding Methods

Function	GeKaLaser	Conventional Function
Material Processed Temperature	Low	Very High
% of Deformation in Material	%5	%90
Weld Strength in Material	High	Low
Post Welding Work	None or 10% Grinding	Grinding, Polishing, Smoothing
Welding Speed	90% (Up to 8 x Faster)	%10
Difficulty of Use	Simple and No - still required	Complex and Skill Required
Consumables Expense	Less	High
Operator Safety	Top Level	No
Weld Width	Adjustable 0.8 - 5 mm	Fixed
Wire Feed	Usable With or Without Feeding	Yes
Resource Influence	Adjustable 0 mm - 10 mm	Fixed
Energy consumption	Low	High
Eco-Friendly	Yes	No
Long Lasting	Yes	No

**Torch Cable Housing Area**

**Torch Cable Housing Area**

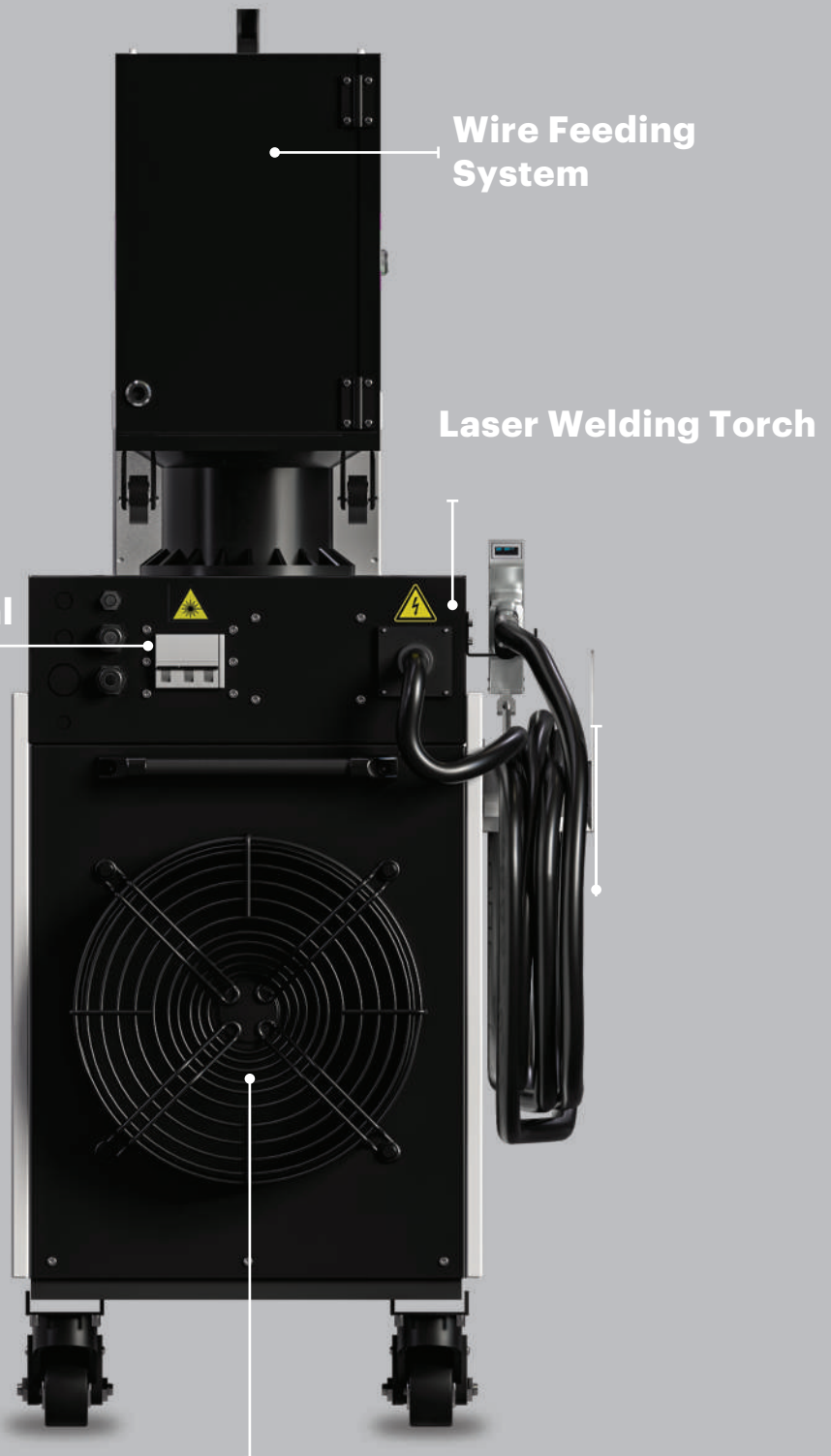
**Turkish Smart Control Panel**

**Durable Body**

**Warning Leds**

**HIGH QUALITY LASER**

**Life of 100,000 Hours, Fully Hand- made  
High efficiency**



**Wire Feeding System**

**Laser Welding Torch**

**Superior Quality Switchgear Material**

**Intelligent Water Cooling System**

**Specially designed water cooling systems for Fiber Laser, compatible with all climates**



# SMART CONTROL SYSTEM

- 7 Different Welding Modes
- Simplified User Interface
- Turkish Language Support
- Different Types of Registration
- Ramp Stop And Start
- Spot-Weld
- Detailed Error Screen
- Led Warning System
- Laser Light Width Up To 5 mm
- Adjustable Laser
- Cleaning Mode
- Safe Stop Emergency Shutdown
- Advanced PILZ Security System
- Durable Industrial Display Screen
- 0-30 Hz Frequency Range
- Adjustable Throttle Stop/ Start



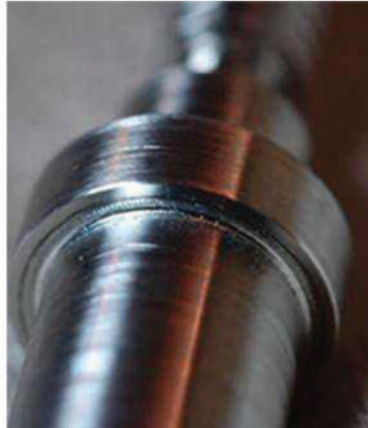
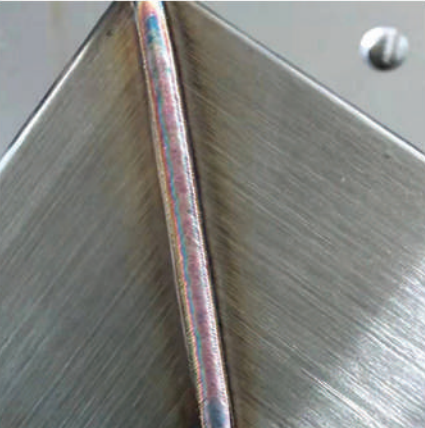
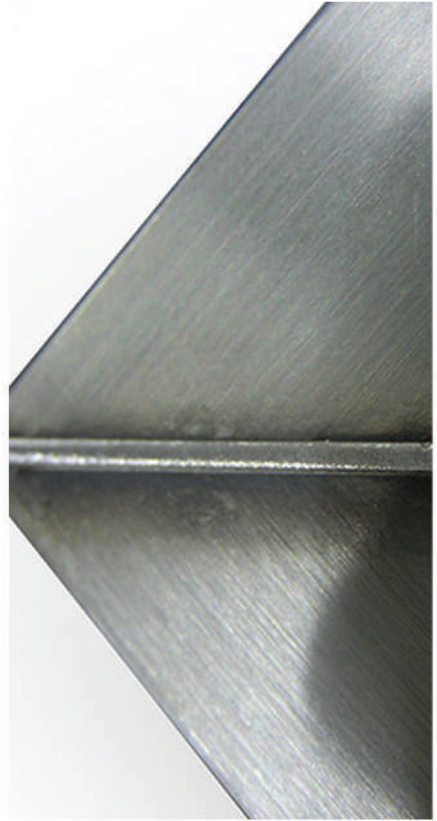
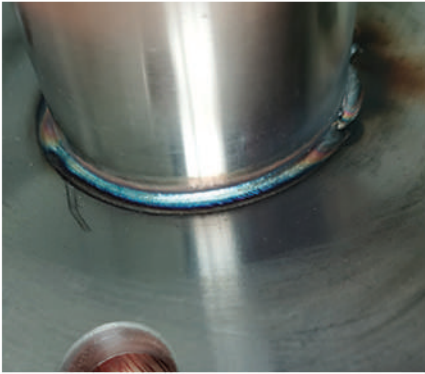


**MINIMALIST**  
DESIGN

**EASY**  
PORTABLE

**ECO-**  
FRIENDLY

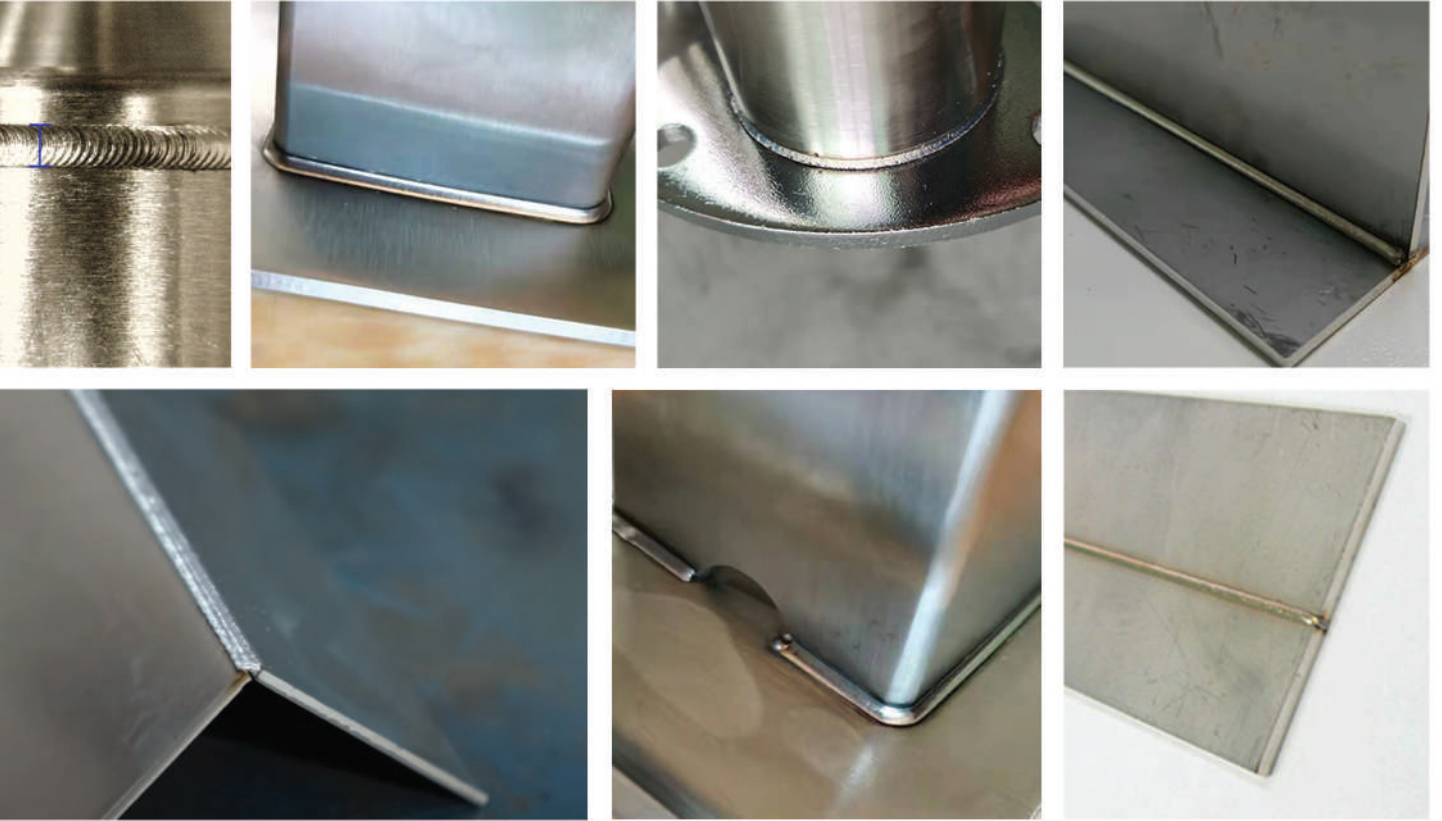
# EXAMPLES OF APPLICATION



## SECTORS

---

- Industrial Kitchens
- Aluminum & Material
- Shelf and Scaffolding Manufacturing
- Machinery Manufacturing
- Ladder Sector
- Balustrade And Window Manufacturing
- Advertising Industry
- Lighting Industry



# GeKaLaser P-1500

Installation and  
Training Service



# GeKaLaser P-1500

## TECHNICAL PARAMETERS

Machine Type	Hand Type
Laser Power	1500W/1,5kW
Laser Welding Type	Fiber
Point Size	0.2-5mm
Laser Wavelength	1080nm
Pulse Width	≤10ms
Max Energy Used	8kW
Cooling Type	Water Cooling (Internal)
Fiber Cable Length	8mt
Wire Feeding System	Outside
Cleaning Feature	Max. 5mm
Warranty Period	2 Years

## WELDING PARAMETERS

WELDING TYPE	BLACK MATERIAL	STAINLESS	ALUMINIUM	COPPER/ BRASS
With Wire	10 mm	8 mm	4 mm	2 mm

# GeKaLaser P-2000

Installation and  
Training Service



# GeKaLaser P-2000

## TECHNICAL PARAMETERS

Machine Type	Hand Type
Laser Power	2000W/2kW
Laser Welding Type	Fiber
Point Size	0.2-5mm
Laser Wavelength	1080nm
Pulse Width	≤10ms
Max Energy Used	10kW
Cooling Type	Water Cooling (Internal)
Fiber Cable Length	8mt
Wire Feeding System	Outside
Cleaning Feature	Max. 5mm
Warranty Period	2 Years

## WELDING PARAMETERS

WELDING TYPE	BLACK MATERIAL	STAINLESS	ALUMINIUM	COPPER/ BRASS
With Wire	14 mm	10 mm	6 mm	3,5 mm

# GeKaLaser P-3000

Installation and  
Training Service



# GeKaLaser P-3000



## TECHNICAL PARAMETERS

Machine Type	Hand Type
Laser Power	3000W/3kW
Laser Welding Type	Fiber
Point Size	02-12mm
Laser Wavelength	1080nm
Pulse Width	≤10ms
Max Energy Used	10kW
Cooling Type	Water Cooling (Internal)
Fiber Cable Length	8mt
Wire Feeding System	Outside
Cleaning Feature	Max. 5mm
Warranty Period	2 Years

## WELDING PARAMETERS

WELDING TYPE	BLACK MATERIAL	STAINLESS	ALUMINIUM	COPPER/ BRASS
With Wire	14 mm	10 mm	6 mm	3,5 mm



**GeKaLaser**<sup>®</sup>